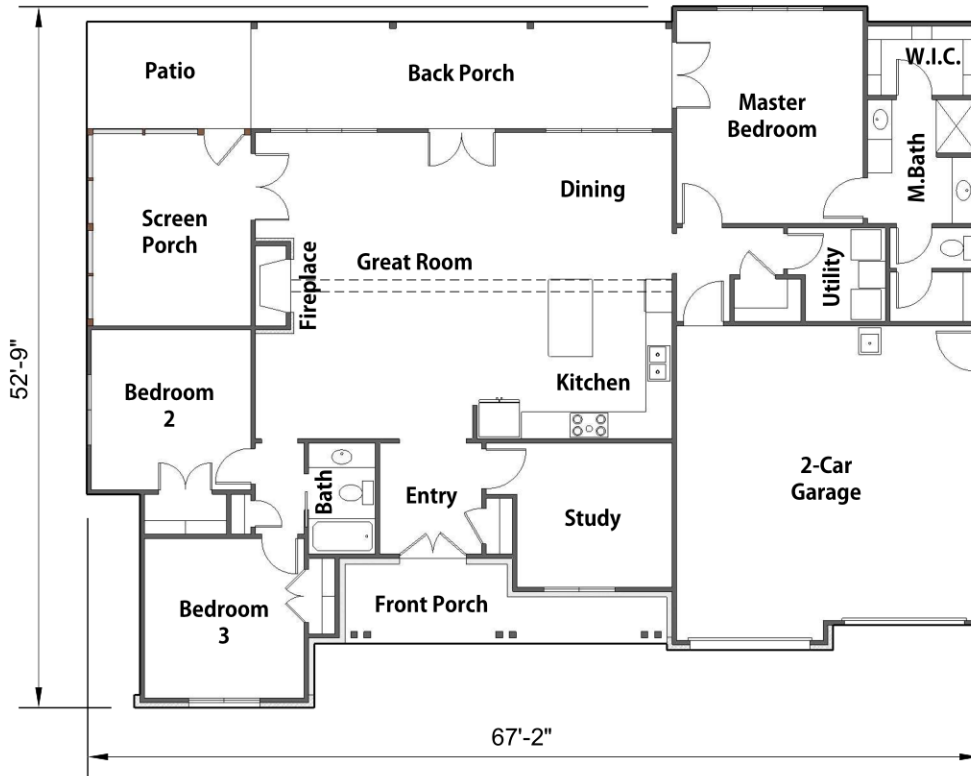


PINYON

1960 SF Home - 3 Bedrooms - 2 Bathrooms - Study - Screen Porch
 2-Car Garage - Open Floor Plan - Large Front & Back Porches - Fireplace



Floor Plan



Front View

TOTAL LIVING AREA:	1960 SF
PORCHES:	383 SF
SCREEN PORCH:	183 SF
GARAGE:	538 SF
TOTAL UNDER ROOF:	3064 SF



Back View



amberdilanehomes.com

903-887-4228